

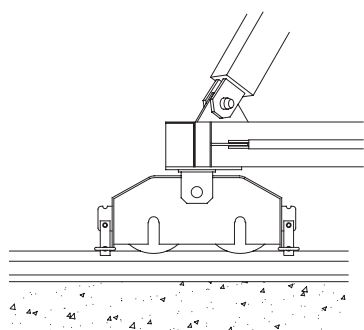
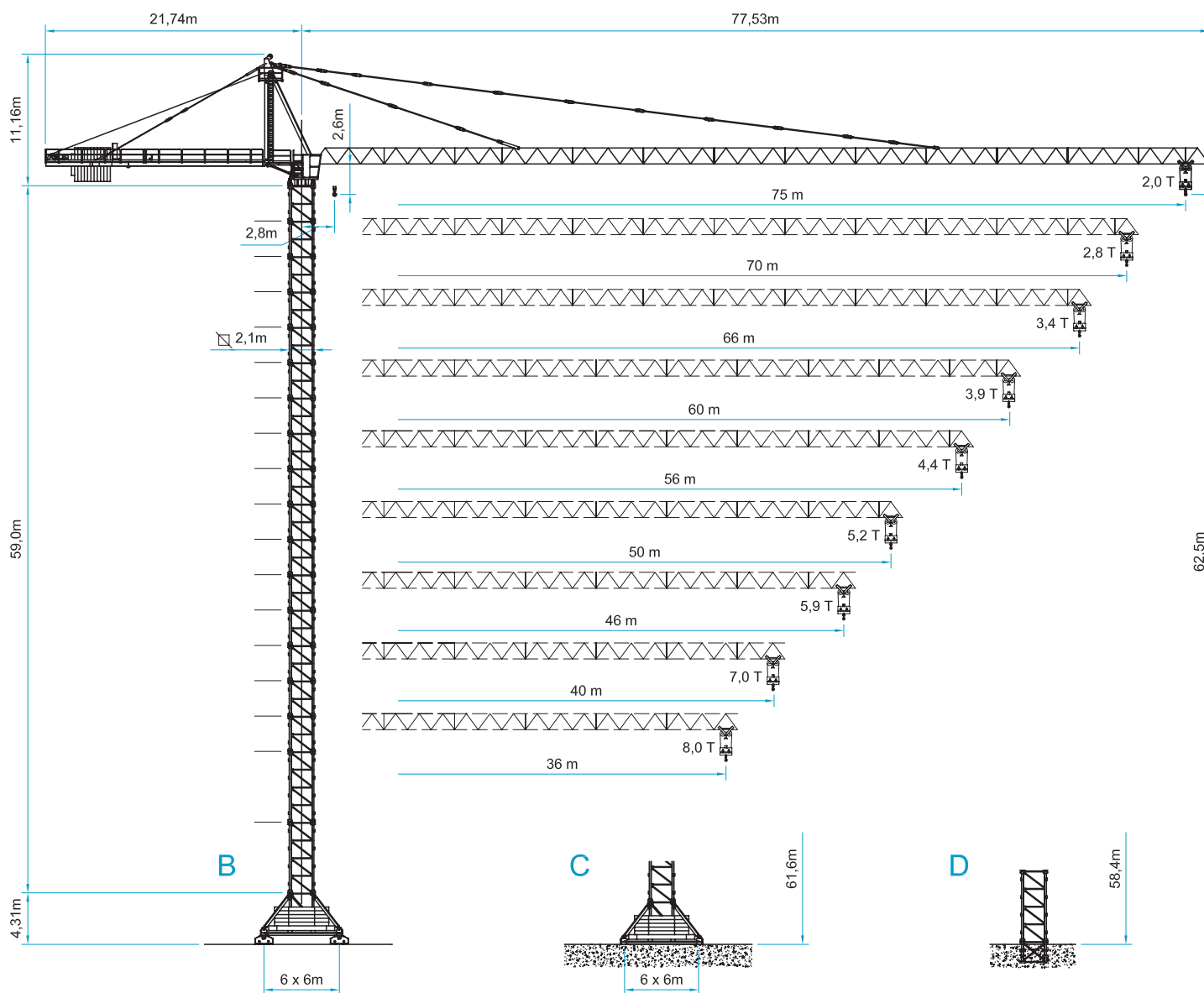
ER240

GRU DA CITTÀ - CITY CRANE
CITY CRANE - CITY KRAN

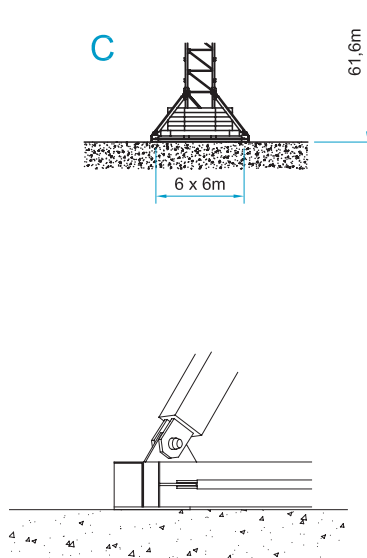
RAIMONDI



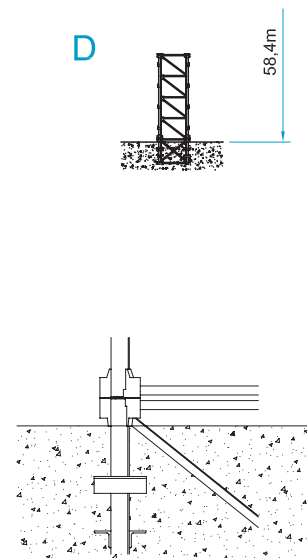
A4 FEM1,001



B








C



D

PORTATA

Load - Charge - Tragfähigkeit

Portata max / Max s.w.l. Charge maxi Max. Tragfähigkeit		 12000 Kg. / 6000 Kg. 									 14000 Kg. / 7000 Kg. 										
Sbraccio / Jib Ausladung /Portée	m.	36	40	46	50	56	60	66	70	75	36	40	46	50	56	60	66	70	75		
Campo di portata max da Max s.w.l. range from Charge maxi de Max. Tragfähigkeit von	2,8m a to à bis	25,3	24,6	24,1	23,5	23,0	22,3	22,0	20,2	17,1	22,1	21,4	21,0	20,6	20,1	19,5	19,3	17,7	15,0		
Sbraccio (m.) Radius (m.) Portée (m.) Ausladung (m.)		15	12000	12000	12000	12000	12000	12000	12000	12000	12000	14000	14000	14000	14000	14000	14000	14000	14000	14000	
		16	12000	12000	12000	12000	12000	12000	12000	12000	12000	12000	14000	14000	14000	14000	14000	14000	14000	14000	13179
		18	12000	12000	12000	12000	12000	12000	12000	12000	11486	11486	14000	14000	14000	14000	14000	14000	14000	13874	11485
		20	12000	12000	12000	12000	12000	12000	12000	12000	10148	10148	14000	14000	14000	14000	14000	13744	13555	12285	10148
		22	12000	12000	12000	12000	12000	12000	12000	10999	9066	9066	14000	13672	13392	13058	12710	12319	12148	10999	9605
		24	12000	12000	12000	11817	11500	11142	10986	9937	8171	8171	12809	12378	12122	11816	11499	11142	10985	9937	8171
		26	11687	11290	11055	10774	10482	10153	10010	9045	7420	7420	11687	11290	11054	10773	10482	10153	10009	9044	7420
		28	10731	10364	10146	9885	9615	9311	9178	8284	6780	6780	10731	10363	10154	9885	9615	9310	9177	8284	6780
		30	9907	9565	9362	9120	8868	8585	8461	7629	6229	6229	9907	9565	9362	9119	8868	8584	8460	7628	6228
		32	9189	8869	8679	8453	8218	7952	7836	7058	5707	5707	9189	8869	8672	8452	8217	7952	7836	7058	5776
		34	8559	8258	8079	7867	7646	7396	7288	6557	5320	5320	8558	8257	8079	7866	7645	7396	7287	6642	5382
		36	8000	7716	7548	7347	7139	6904	6802	6112	4978	4978	8000	7716	7548	7347	7139	7000	6933	6221	5033
		38		7233	7074	6884	6687	6465	6368	5803	4672	4672		7233	7074	7000	6891	6648	6519	5846	4722
		40		6800	6649	6469	6282	6071	6000	5471	4398	4398		7000	6948	7000	6501	6270	6148	5509	4443
		42			6265	6094	6000	5907	5784	5171	4151	4151		6565	7000	6149	5929	5813	5205	4191	
	44			6000	6000	5816	5601	5483	49000	3927	3927		6217	6026	5829	5619	5509	4929	3962		
	46			5900	5722	5527	5322	5210	4652	3722	3722		5900	5726	5538	5338	5232	4678	3754		
	48			5450	5263	5067	4960	4425	3535				5452	5271	5080	4978	4448	3563			
	50			5200	5021	4833	4730	4217	3363				5200	5027	4843	4746	4237	3388			
	52				4798	4617	4518	4026	3205					4801	4625	4531	4043	3227			
	54				4591	4418	4322	3848	3059					4593	4423	4333	3863	3078			
	56				4400	4233	4140	3684	2923					4400	4236	4149	3696	2940			
	58					4060	3972	3531	2727						4062	3978	3541	2811			
	60					3900	3814	3389	2679						3900	3819	3396	2692			
	62						3667	3255	2569							3670	3261	2580			
64						3529	3131	2467							3530	3135	2475				
66						3400	3014	2370							3400	3016	2376				
68							2904	2279								2905	2284				
70							2800	2194								2800	2197				
72								2113									2115				
74								2037									2037				
75								2000									2000				

Con sistema "ULTRALIFT" tutte le portate intermedie sono aumentate del 10%
All intermediate loads are increased of 10% if the crane is equipped with "ULTRALIFT" control
Les charges intermédiaires sont augmentées de 10% si la grue est équipée avec contrôle "ULTRALIFT"